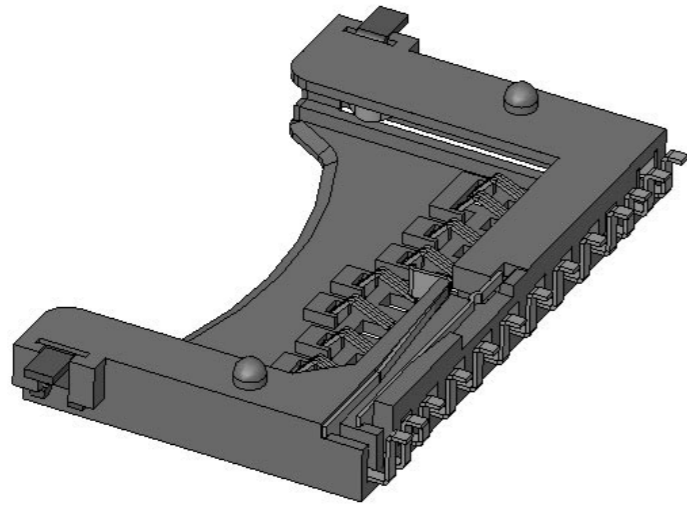


# 412D03

## SD Connector Reverse Type



### SPECIFICATION

#### MATERIAL

Insulator	LCP
Contacts	Phosphor Bronze

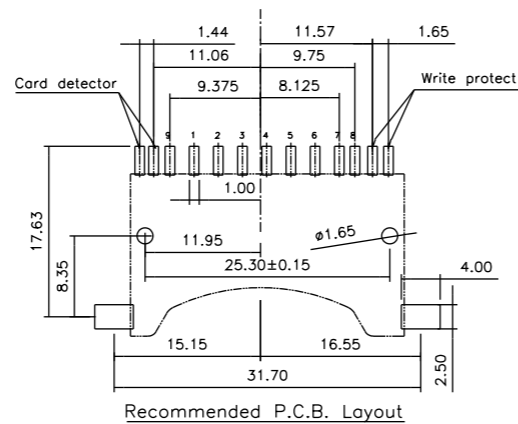
#### ELECTRICAL

Current rating	1 Amps Max.
Contact resistance	100 mΩ Max.
Insulation resistance	1,000 MΩ Min.

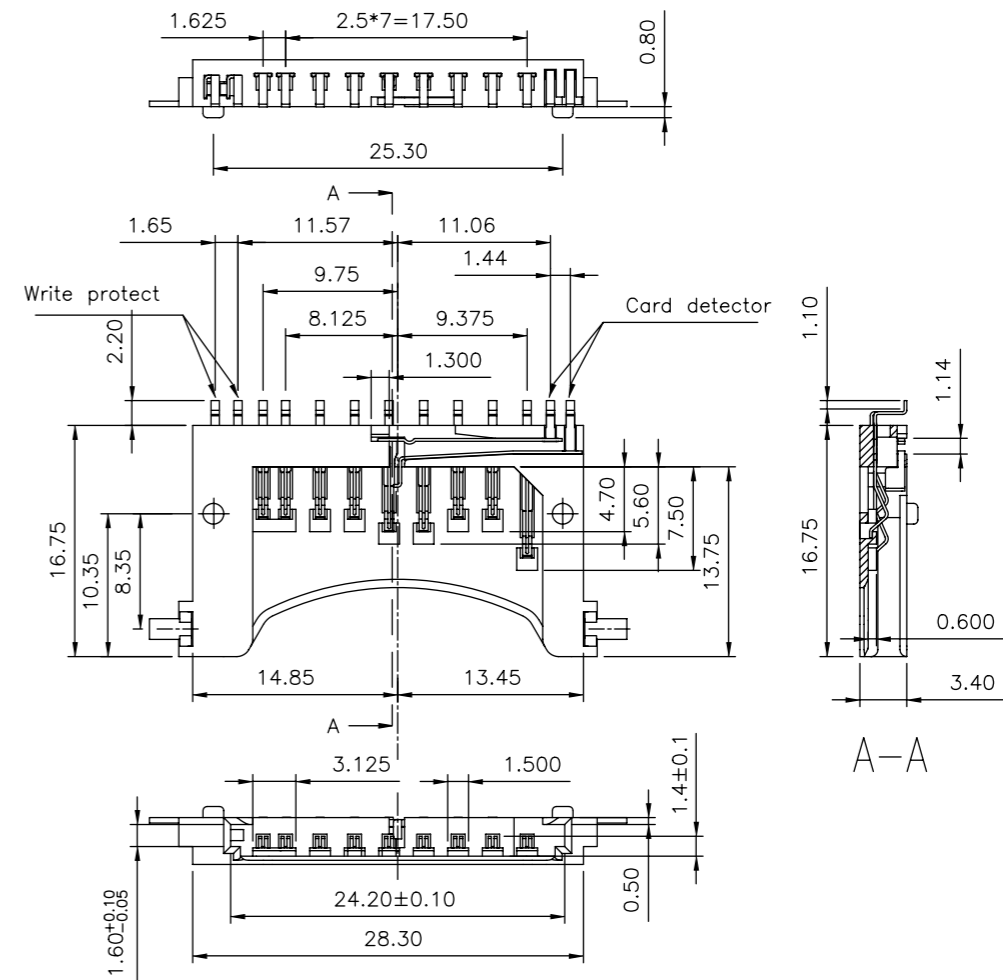
#### MECHANICAL

Mating cycle	10,000 cycles
Operating temperature	-25°C to +85°C

### P.C.B. LAYOUT



### SD Connector Reverse Type



### How to Order

**412** **D03** - **09** **P** **X** **0** **0** **3**

1 2 3 4 5 6 7 8

#### 1. SERIES NO.

412 = SD

#### 2. TYPE

D03 = SMT Reverse

#### 3. CONTACT NUMBER

9 Pins

#### 4. CONTACT TYPE

P = Non-Distribution

#### 5. CONTACT AREA PLATING

S = Selective Gold Plating  
 A = 5μ" Gold (Selective)  
 B = 10μ" Gold (Selective)  
 C = 15μ" Gold (Selective)  
 D = 30μ" Gold (Selective)

#### 6. FILL IT WITH "0"

#### 7. FILL IT WITH "0"

#### 8. INSULATOR COLOR

3 = Black