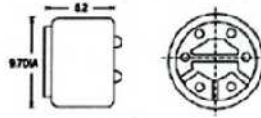


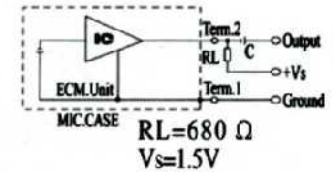


Dimensions

Lead Wire Type KPCM - 206B



Schematic



Specifications

- Sensitivity :See Model No. Table
- Impedance :680  $\Omega$  Max
- Standard Power Supply :1.5V DC
- Current Consumption :0.5mA Max
- Sensitivity Reduction :within-1dB at 1.0V
- S/N Ratio :more than 60dB
- Directivity :Uni directional
- :more than -13dB at 180°

Sensitivity (dBm-V <sub>o</sub> at 940)	Sensitivity show method
-66 $\pm$ 2dB	As 1 pa=10ub, therefore when
-64 $\pm$ 2dB	it be pa or ub showed, there would
-62 $\pm$ 2dB	be -20ub distance between them.
-60 $\pm$ 2dB	For examples:
-58 $\pm$ 2dB	-40dB(0dB=1 v/pa)is equivalent to
-56 $\pm$ 2dB	-60dB(0dB=1 v/ub)

Frequency Response

