

ULN2003AP, ULN2003AFW, ULN2004AP, ULN2004AFW

7CH DARLINGTON SINK DRIVER

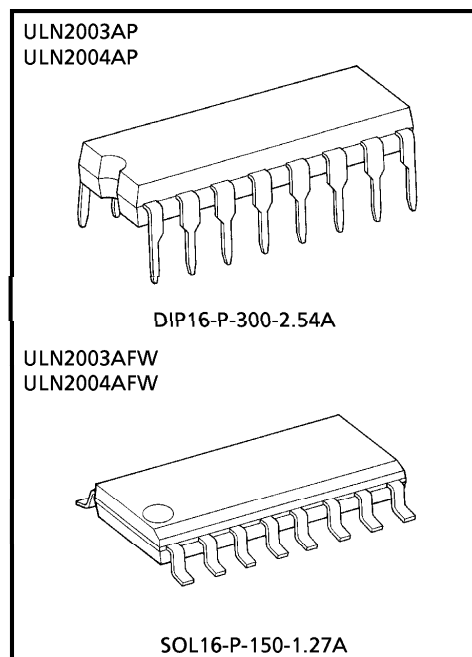
The ULN2003AP / AFW Series are high-voltage, high-current darlington drivers comprised of seven NPN darlington pairs.

All units feature integral clamp diodes for switching inductive loads.

Applications include relay, hammer, lamp and display (LED) drivers.

FEATURES

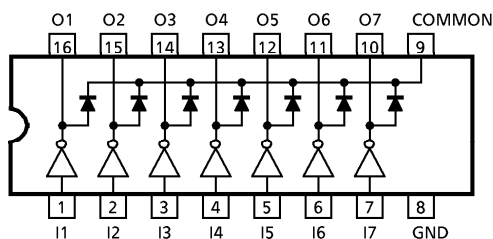
- Output current (single output) 500mA MAX.
- High sustaining voltage output
50V MIN. (ULN2003AP / AFW Series)
- Output clamp diodes
- Inputs compatible with various types of logic
- Package Type-AP : DIP-16pin
- Package Type-AFW : SOL-16pin



Weight
 DIP16-P-300-2.54A : 1.11g (Typ.)
 SOL16-P-150-1.27A : 0.15g (Typ.)

TYPE	INPUT BASE RESISTOR	DESIGNATION
ULN2003AP / AFW	2.7kΩ	TTL, 5V CMOS
ULN2004AP / AFW	10.5kΩ	6~15V PMOS, CMOS

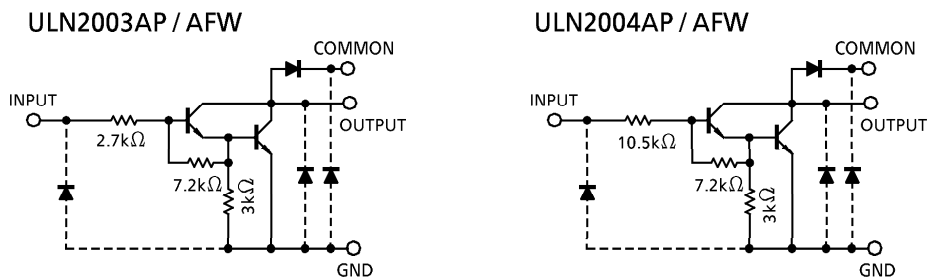
PIN CONNECTION (TOP VIEW)



961001EBA1

- TOSHIBA is continually working to improve the quality and the reliability of its products. Nevertheless, semiconductor devices in general can malfunction or fail due to their inherent electrical sensitivity and vulnerability to physical stress. It is the responsibility of the buyer, when utilizing TOSHIBA products, to observe standards of safety, and to avoid situations in which a malfunction or failure of a TOSHIBA product could cause loss of human life, bodily injury or damage to property. In developing your designs, please ensure that TOSHIBA products are used within specified operating ranges as set forth in the most recent products specifications. Also, please keep in mind the precautions and conditions set forth in the TOSHIBA Semiconductor Reliability Handbook.
- The products described in this document are subject to foreign exchange and foreign trade control laws.
- The information contained herein is presented only as a guide for the applications of our products. No responsibility is assumed by TOSHIBA CORPORATION for any infringements of intellectual property or other rights of the third parties which may result from its use. No license is granted by implication or otherwise under any intellectual property or other rights of TOSHIBA CORPORATION or others.
- The information contained herein is subject to change without notice.

SCHEMATICS (EACH DRIVER)



(Note) The input and output parasitic diodes cannot be used as clamp diodes.

MAXIMUM RATINGS (Ta = 25°C)

CHARACTERISTIC	SYMBOL	RATING	UNIT
Output Sustaining Voltage	$V_{CE(SUS)}$	- 0.5~50	V
Output Current	I_{OUT}	500	mA / ch
Input Voltage	V_{IN}	- 0.5~30	V
Clamp Diode Reverse Voltage	V_R	50	V
Clamp Diode Forward Current	I_F	500	mA
Power Dissipation	AP	1.47	W
	AFW	0.54 / 0.625 (Note)	
Operating Temperature	T_{opr}	- 40~85	°C
Storage Temperature	T_{stg}	- 55~150	°C

(Note) On glass epoxy PCB (30 × 30 × 1.6mm Cu 50%)

RECOMMENDED OPERATING CONDITIONS (Ta = -40~85°C)

CHARACTERISTIC		SYMBOL	CONDITION		MIN.	TYP.	MAX.	UNIT
Output Sustaining Voltage		V _{CE (SUS)}			0	—	50	V
Output Current	AP	I _{OUT}	T _{pw} = 25ms 7 Circuits Ta = 85°C Tj = 120°C	Duty = 10%	0	—	370	mA / ch
	AFW			Duty = 50%	0	—	130	
				Duty = 10%	0	—	233	
				Duty = 50%	0	—	70	
Input Voltage		V _{IN}			0	—	24	V
Input Voltage (Output On)	ULN2003A	V _{IN (ON)}	I _{OUT} = 400mA h _{FE} = 800		2.8	—	24	V
	ULN2004A				6.2	—	24	
Input Voltage (Output Off)	ULN2003A	V _{IN (OFF)}			0	—	0.7	V
	ULN2004A				0	—	1.0	
Clamp Diode Reverse Voltage		V _R			—	—	50	V
Clamp Diode Forward Current		I _F			—	—	350	mA
Power Dissipation	AP	P _D	Ta = 85°C		—	—	0.76	W
	AFW		(Note) Ta = 85°C		—	—	0.325	

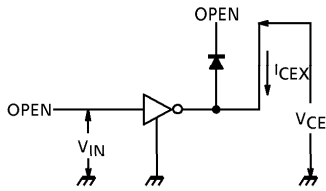
(Note) On glass epoxy PCB (30×30×1.6mm Cu 50%)

ELECTRICAL CHARACTERISTICS (Ta = 25°C unless otherwise noted)

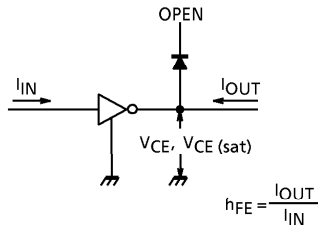
CHARACTERISTIC	SYMBOL	TEST CIRCUIT	TEST CONDITION	MIN.	TYP.	MAX.	UNIT	
Output Leakage Current	I _{CEX}	1	V _{CE} = 50V, Ta = 25°C	—	—	50	μA	
			V _{CE} = 50V, Ta = 85°C	—	—	100		
Collector-Emitter Saturation Voltage	V _{CE (sat)}	2	I _{OUT} = 350mA, I _{IN} = 500μA	—	1.3	1.6	V	
			I _{OUT} = 200mA, I _{IN} = 350μA	—	1.1	1.3		
			I _{OUT} = 100mA, I _{IN} = 250μA	—	0.9	1.1		
DC Current Transfer Ratio	h _{FE}	2	V _{CE} = 2V, I _{OUT} = 350mA	1000	—	—		
Input Current (Output On)	ULN2003A	3	I _{IN (ON)}	V _{IN} = 2.4V, I _{OUT} = 350mA	—	0.4	0.7	mA
	ULN2004A							
Input Current (Output Off)	I _{IN (OFF)}	4	I _{OUT} = 500μA, Ta = 85°C	50	65	—	μA	
Input Voltage (Output On)	ULN2003A	5	V _{CE} = 2V h _{FE} = 800	I _{OUT} = 350mA	—	—	2.6	V
				I _{OUT} = 200mA	—	—	2.0	
	ULN2004A			I _{OUT} = 350mA	—	—	4.7	
				I _{OUT} = 200mA	—	—	4.4	
Clamp Diode Reverse Current	I _R	6	V _R = 50V, Ta = 25°C	—	—	50	μA	
			V _R = 50V, Ta = 85°C	—	—	100		
Clamp Diode Forward Voltage	V _F	7	I _F = 350mA	—	—	2.0	V	
Input Capacitance	C _{IN}	—		—	15	—	pF	
Turn-On Delay	t _{ON}	8	V _{OUT} = 50V, R _L = 125Ω C _L = 15pF	—	0.1	—	μs	
Turn-Off Delay	t _{OFF}	8	V _{OUT} = 50V, R _L = 125Ω C _L = 15pF	—	0.2	—		

TEST CIRCUIT

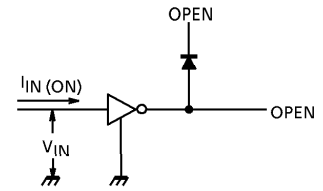
1. I_{CEX}



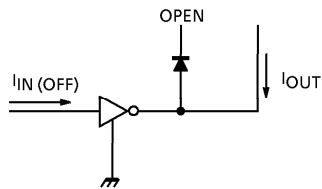
2. $V_{CE} (sat), h_{FE}$



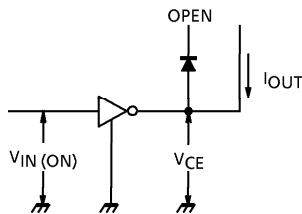
3. $I_{IN} (ON)$



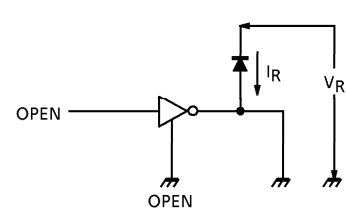
4. $I_{IN} (OFF)$



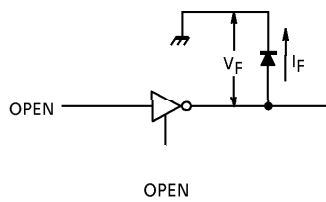
5. $V_{IN} (ON)$



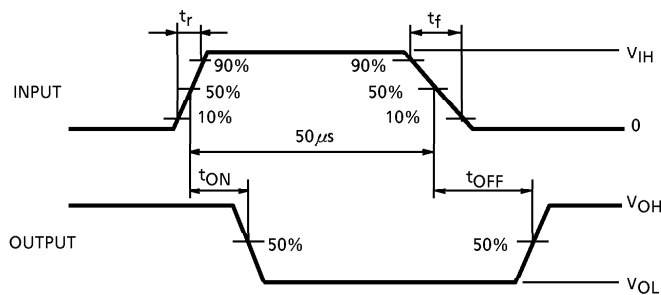
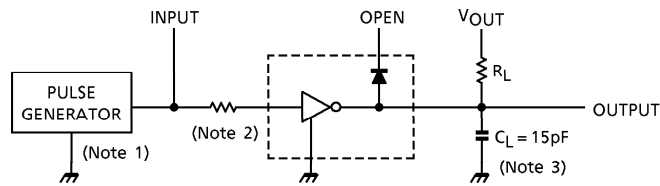
6. I_R



7. V_F



8. t_{ON} , t_{OFF}



- (Note 1) Pulse width $50\mu s$, duty cycle 10%
Output impedance 50Ω , $t_r \leq 5ns$, $t_f \leq 10ns$
- (Note 2) See below

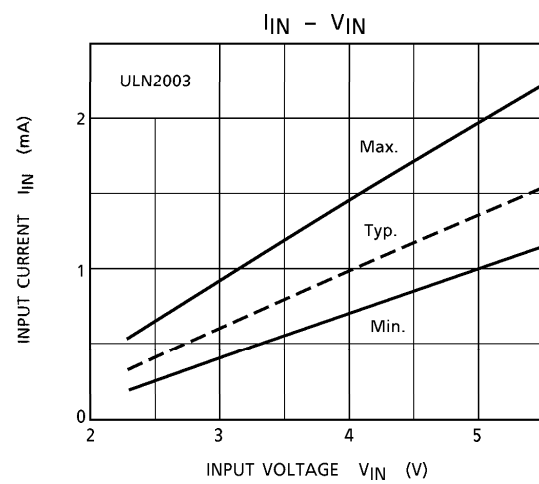
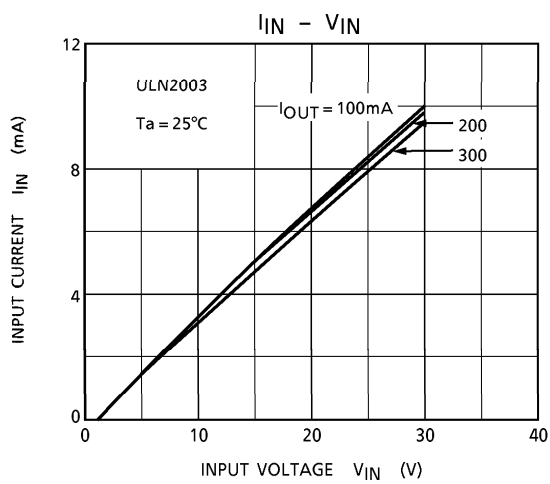
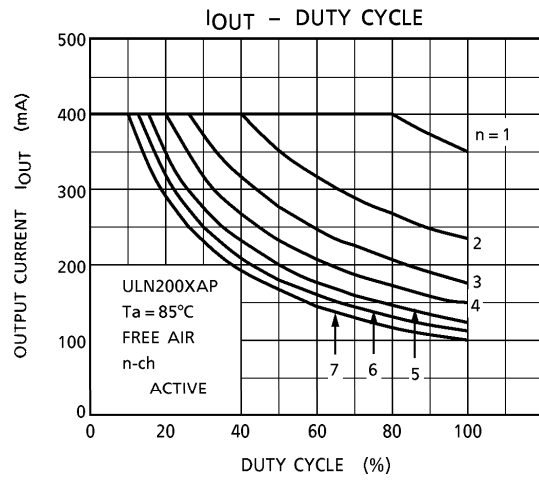
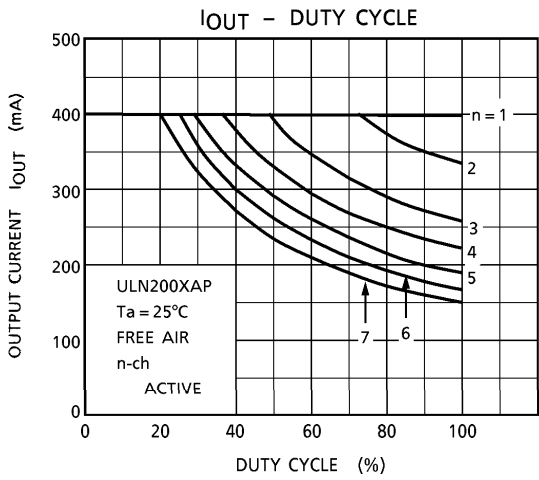
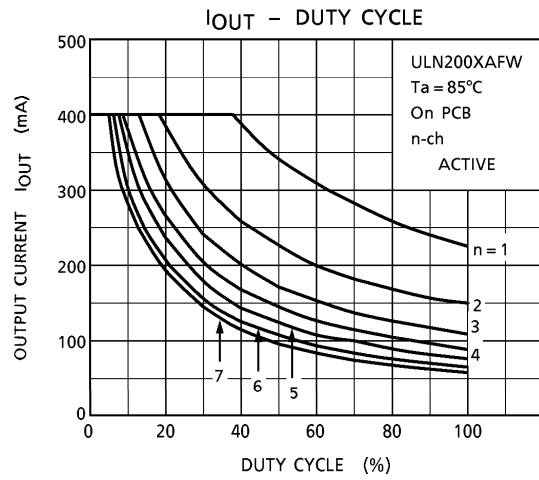
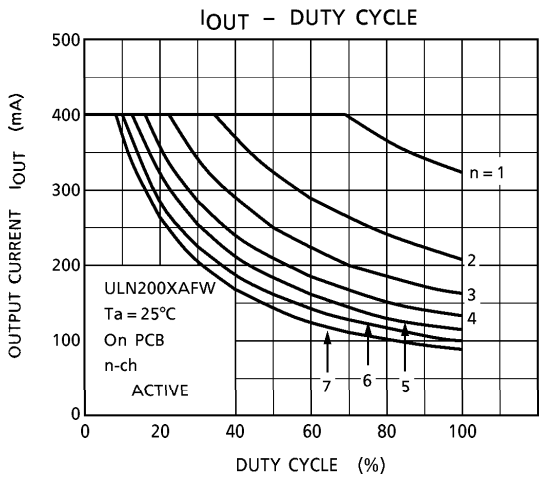
INPUT CONDITION

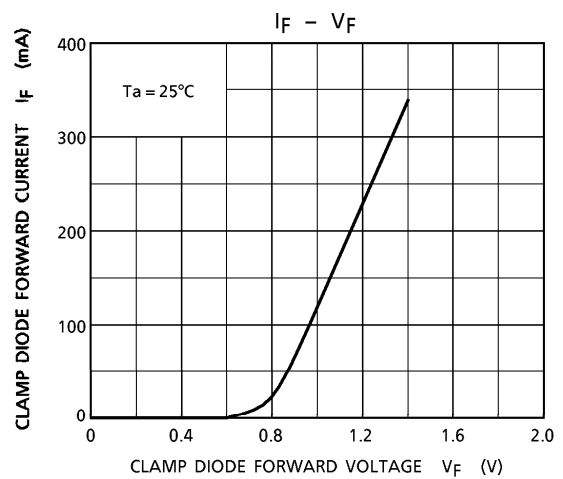
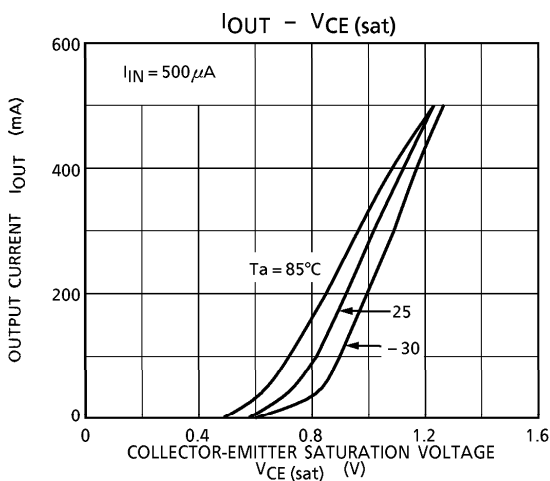
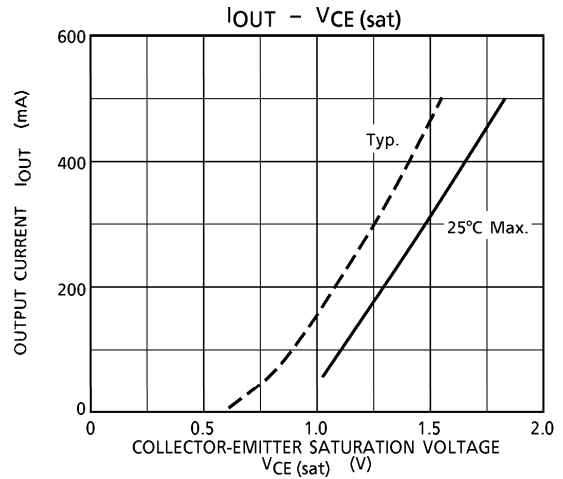
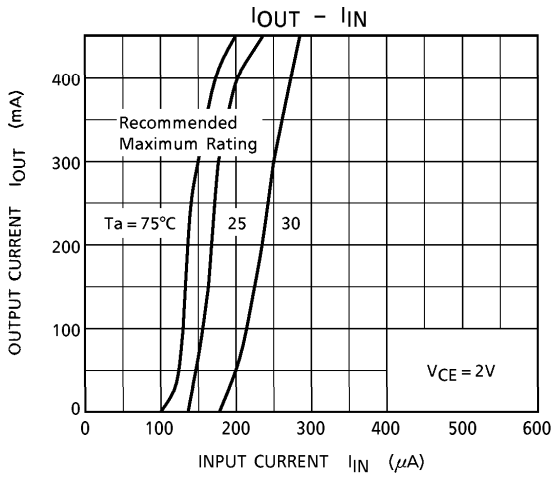
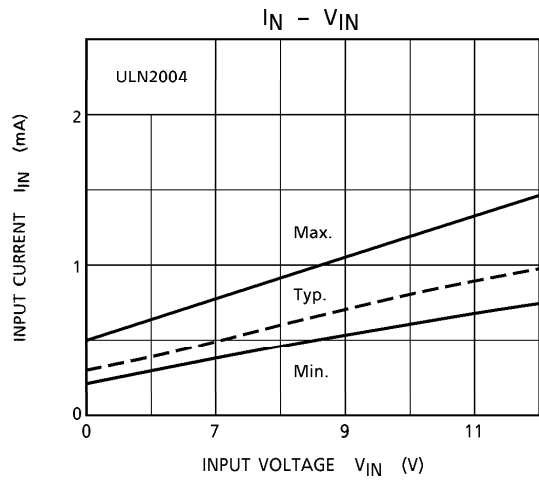
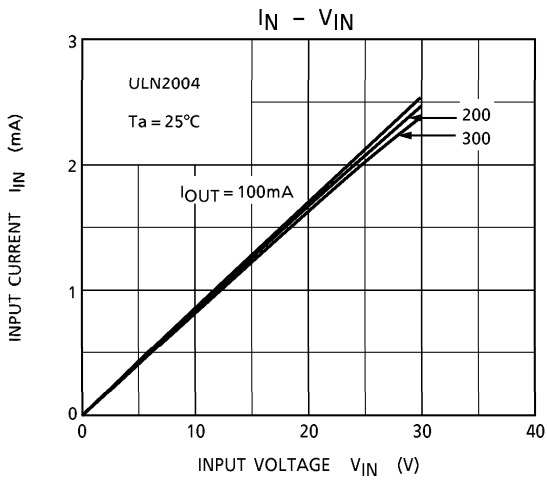
TYPE NUMBER	R1	V_{IH}
ULN2003AP / AFW	0	3V
ULN2004AP / AFW	0	8V

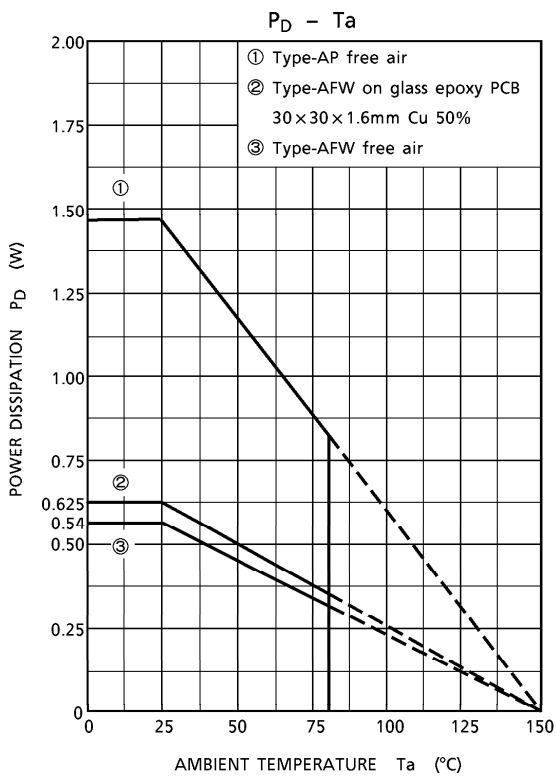
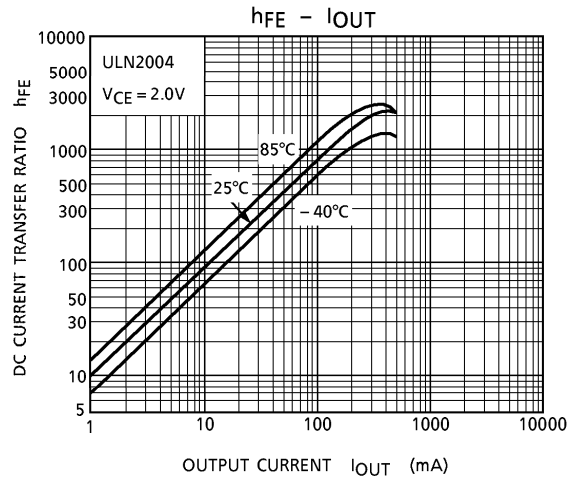
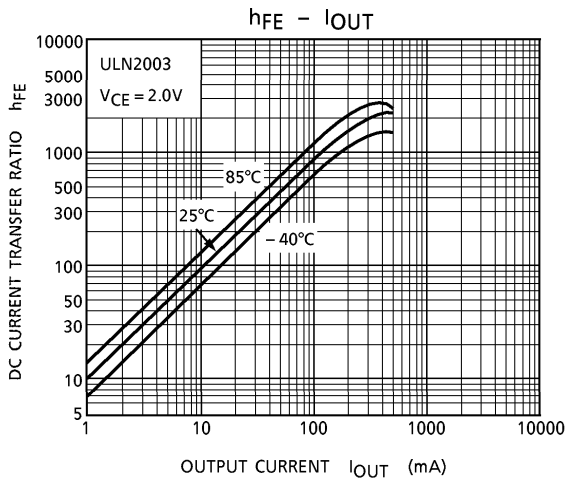
- (Note 3) C_L includes probe and jig capacitance.

PRECAUTIONS for USING

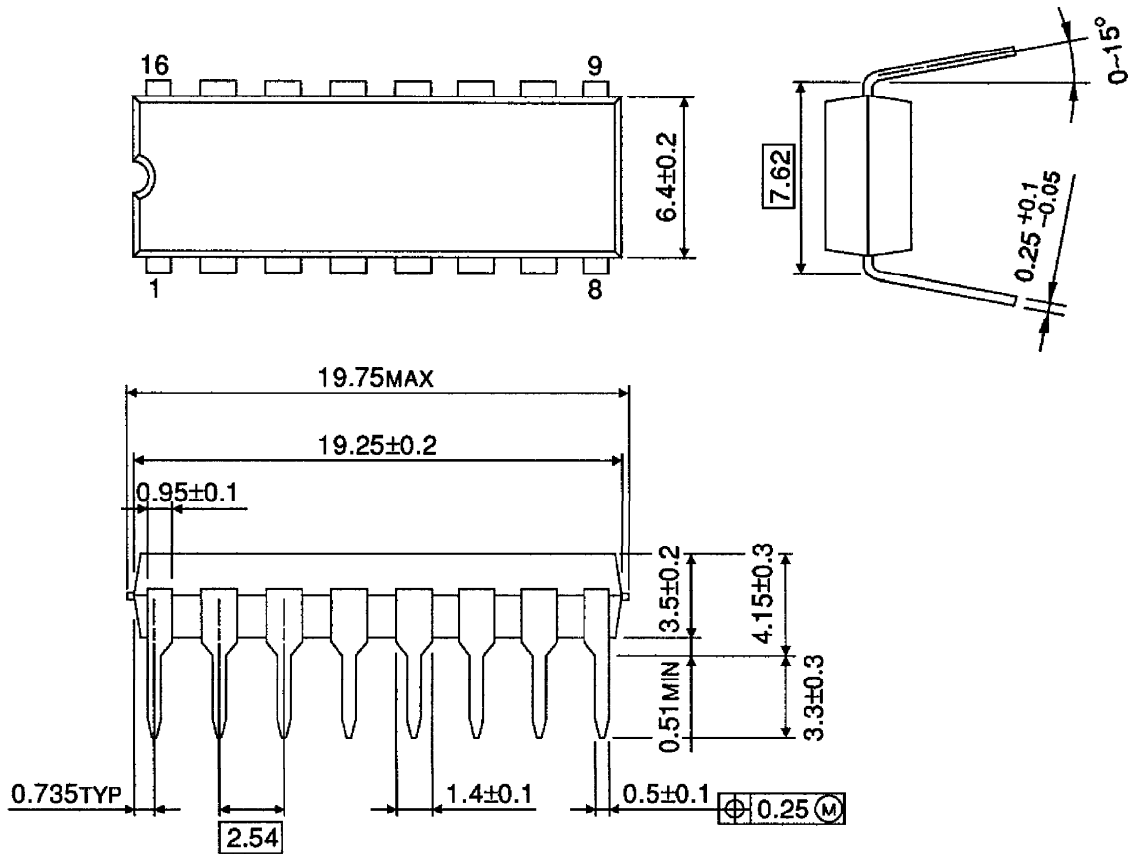
Utmost care is necessary in the design of the output line, COMMON and GND line since IC may be destroyed due to short-circuit between outputs, air contamination fault, or fault by improper grounding.





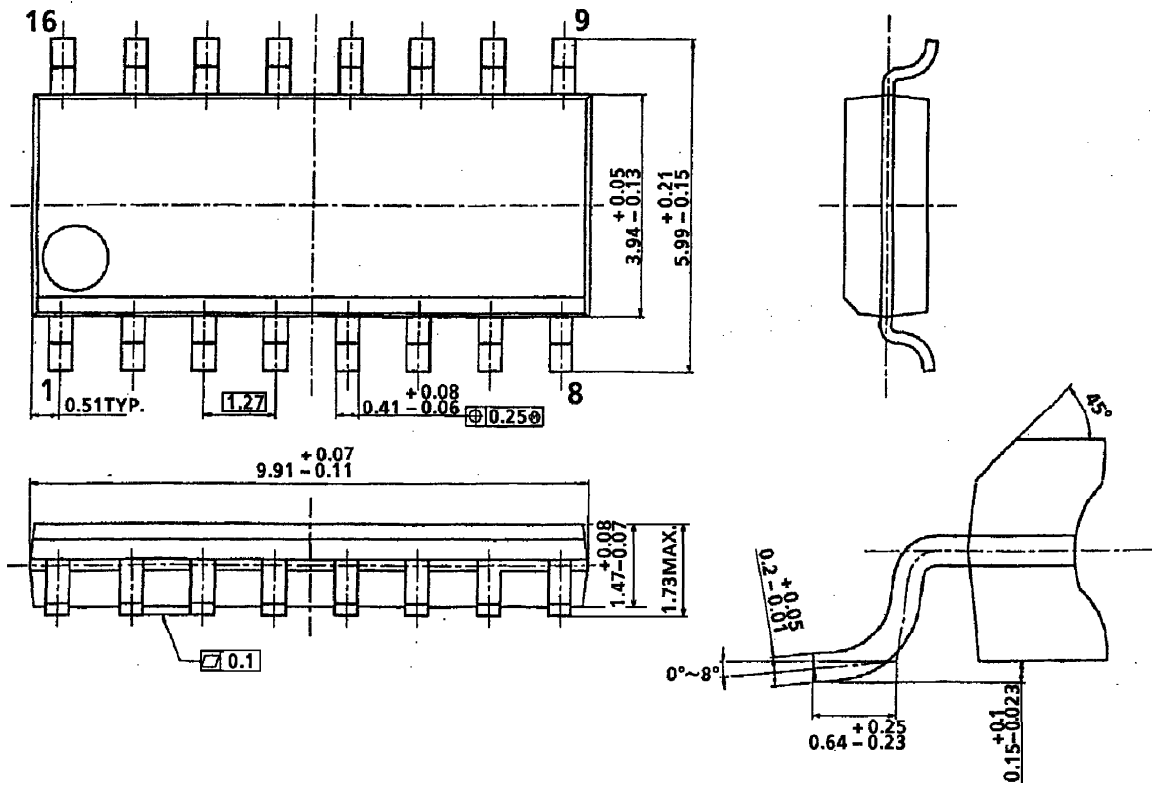


OUTLINE DRAWING
DIP16-P-300-2.54A



Weight : 1.11g (Typ.)

OUTLINE DRAWING
SOL16-P-150-1.27A



Weight : 0.15g (Typ.)